

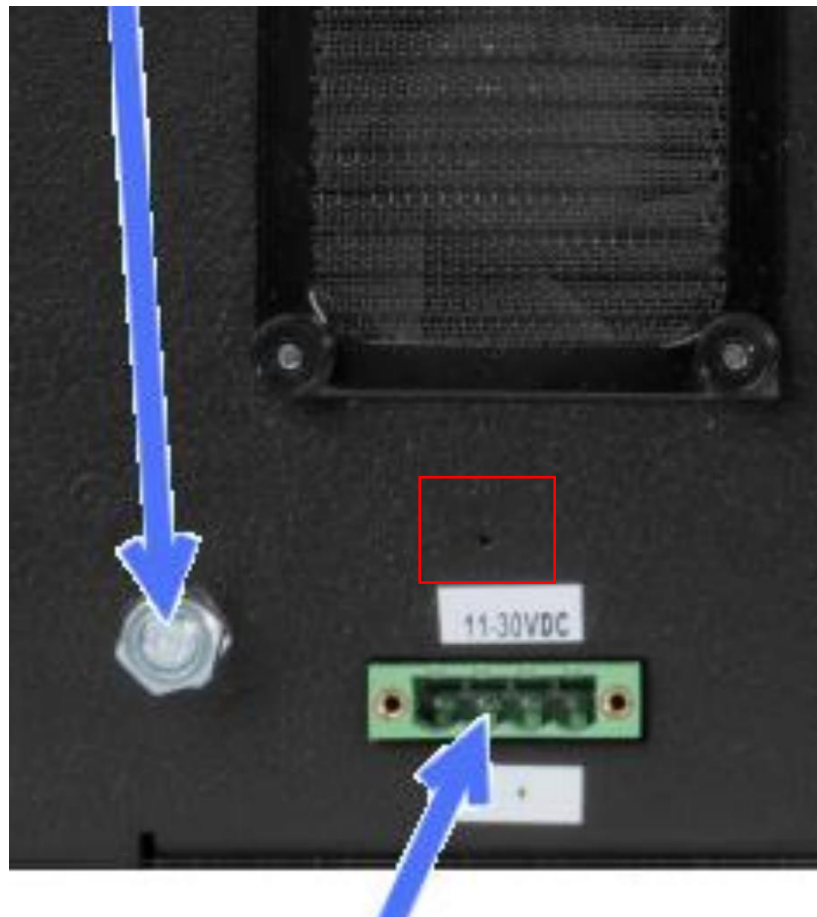
Viper Base Station Controller Firmware Upgrade

This procedure steps the user through the base station controller firmware upgrade.

!!!!!!!Very Important to Read!!!!!!!

Note: NextGn RF will supply all the folder containing all the files for the upgrde. Some upgrdes may require 3 files others might require 5 or 6 files. If the base station has firmware earlier than 1.1.7 please do not upgrade until you have discussed this with NextGen technical support. Damage to the base station could occur.

Place the base station back to factory default by pressing the button located in the pinhole just above the green power connector on the back of the base station ***until it beeps***. The default IP address of the base station is 192.168.205.254 user name: admin password: ADMINISTRATOR



Pinhole Factory Reset Button

Each Viper radios should be logged into and set back to factory default using the web pages located under Device Maintenance. The default IP address of each Viper is 192.168.205.1 user name: admin password: ADMINISTRATOR

NextGen RF DESIGN Viper SC IP Router

HELP HOME RESET

Change default settings (Use the SetUp Wizard)

Device Maintenance **Config Control** Package Control Wing Commander Advanced

User Configuration Settings

☐ Save Configuration using this name .drp

Right click here and select "Save As" to download the file "Current_Configuration.drp" to your PC

☐ Import Configuration from

☐ Delete Configuration

Firmware Upgrade Settings

☐ Merge settings bundled in upgrade package with current configuration

Factory Settings

☒ Restore Factory Settings

Proceed Cancel Note: Some operations may take a minute or so to complete

Set the Vipers back to factory default

If the user has any issues please contact your NextGen technical support personnel.

Log in to the base station at 192.168.205.254 and navigate to the Redundant Setup page.

Redundant Base Station

Home Redundant Setup Help

Setup Wizard

Controller Settings

Setup (Basic)

Diagnostics

Routing Table

SNMP

QoS

QoS Statistics

Alarm Port

DeviceOutlook

IPSec

IP Relay Agent

ODM Reports

Multi-speed

Firmware Update

Radio Settings

Setup (Basic)

Diagnostics

System Monitor

Redundant Setup

Ping Statistics

Reset Unit

Ping Settings

Primary Ping IP Address

Secondary Ping IP Address

Ping Timer (0=disabled, 10-3600) 5s steps

Ping Failure Threshold (3-10)

Boot Delay min

Controller Operation

Mode ☐ Auto Select ☒ Manual Override

Primary Radio ☐ Radio A ☒ Radio B

Standby Mode ☒ Cold ☐ Warm

Maximum Radio Switch (0=no limit, 0-1000)

Cancel Save

©Calamp, 2017

Select Manual Mode

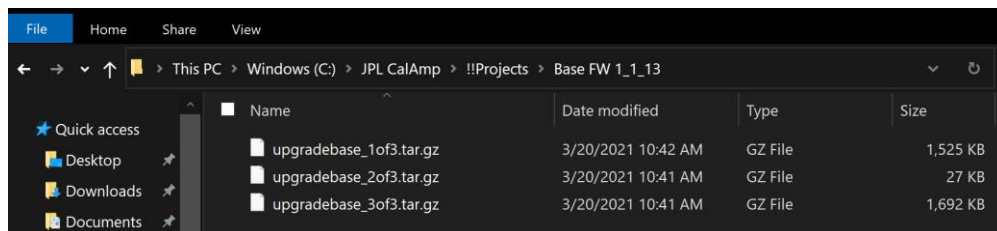
Select Manual Override to ensure base station doesn't switch radios or reset during the update.

Navigate to the Firmware Update page.

The screenshot shows the 'Redundant Base Station' web interface. The left sidebar contains a navigation menu with sections: Home, Setup Wizard, Controller Settings (with sub-items: Setup (Basic), Diagnostics, Routing Table, SNMP, QoS, QoS Statistics, Alarm Port, DeviceOutlook, IPsec, IP Relay Agent, ODM Reports, Multi-speed, and Firmware Update), Radio Settings (with sub-items: Setup (Basic) and Diagnostics), System Monitor (with sub-items: Redundant Setup and Ping Statistics), and Reset Unit. The main content area is titled 'Status' and features a 'Help' link. It displays three tables: 'Controller Ethernet Settings' with IP Address (192.168.205.254), Subnet Mask (255.255.255.0), and MAC Address (00:0A:99:81:6F:85); 'System Information' with Base Station Type (Redundant Base Station), Base Station Model (140-5348-302), Controller HW Revision (F), System Up Time (3 min(s), 35 sec(s)), Current Firmware Version (1.1.13), Current Firmware Build (R202103220900), and Current Kernel Date (Sat Mar 20 07:29:07 PDT 2021); and 'Radio Information' with Radio A Model (Viper: 140-5048-302) and Radio B Model (Viper: 140-5048-302). A 'Refresh Status' button is located below the tables. The footer indicates '© CalAmp, 2017'.

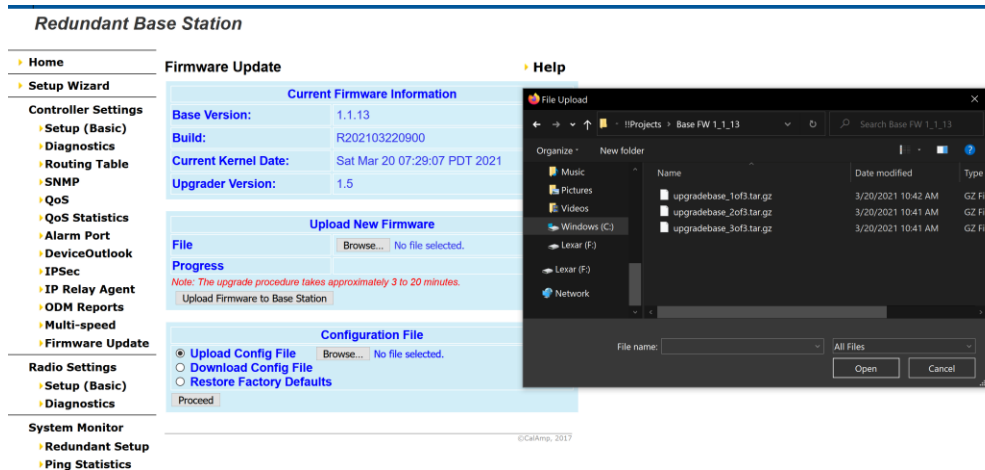
Firmware Update

Place the folder containing the files to upgrade in a known location on the PC that is being used for this update.



Update files in a known location on PC being used

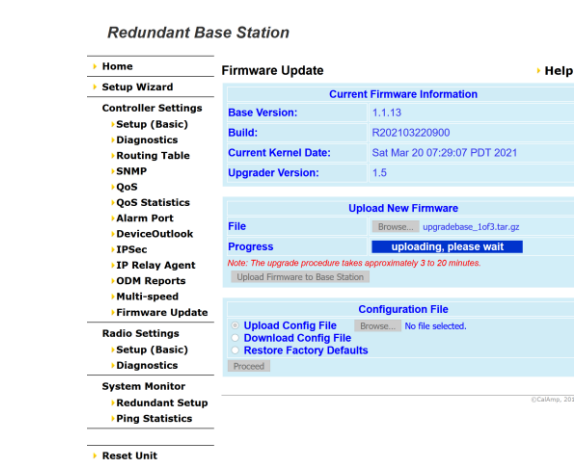
Browse to the update file location.



Files to be Upgraded

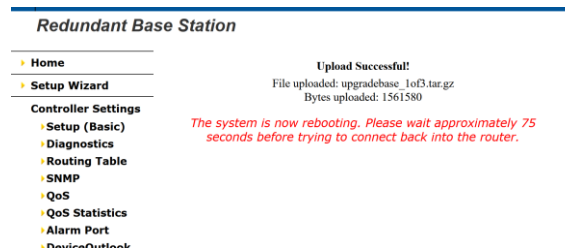
Select the first file of 1 of 3 first, then click on the Update Firmware to Base Station button. The user will be prompted with several alerts.

*At the end of the upgrade procedure, the device may not respond to commands for as long as three minutes. This is normal behavior. **WARNING: Do not power off the device** when the upgrade procedure is in progress.*



Time to Upload will vary from file to file

Once the file has been updated the user will be prompted as shown below.

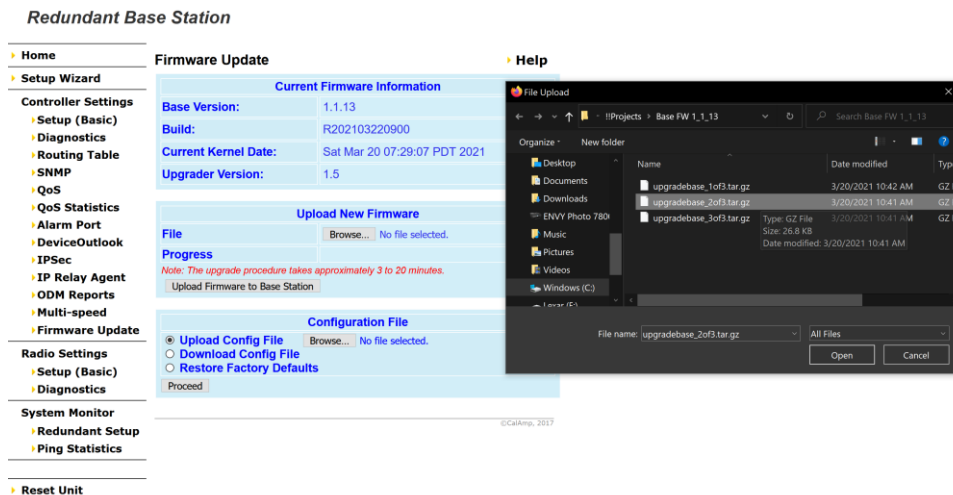


When the file has uploaded the user should be alerted as shown above for each file that is to be upgraded.

It should be noted this upgrade only requires 3 files future upgrades may require only two files or may require 5 files.

The user should hear some internal base station mechanical relays clicking, this is normal. Typically, the user will hear one then after some time two more. The user should click on the Firmware Update button to display the Firmware Update page again to proceed to the next file to be upgraded.

- ▶ **IPSec**
- ▶ **IP Relay Agent**
- ▶ **ODM Reports**
- ▶ **Multi-speed**
- ▶ **Firmware Update**



Next file to be upgraded

Once all the files have been successfully upgraded the user can then program the base station to the desired settings.

Redundant Base Station

Home

Setup Wizard

Controller Settings

- Setup (Basic)
- Diagnostics
- Routing Table
- SNMP
- QoS
- QoS Statistics
- Alarm Port
- DeviceOutlook
- IPSec
- IP Relay Agent
- ODM Reports
- Multi-speed
- Firmware Update

Radio Settings

- Setup (Basic)
- Diagnostics

System Monitor

- Redundant Setup
- Ping Statistics

Status

Controller Ethernet Settings

IP Address	192.168.205.254
Subnet Mask	255.255.255.0
MAC Address	00:0A:99:81:6F:85

System Information

Base Station Type	Redundant Base Station
Base Station Model	140-5348-302
Controller HW Revision	F
System Up Time	2 min(s), 0 sec(s)
Current Firmware Version	1.1.13
Current Firmware Build	R202103220900
Current Kernel Date	Sat Mar 20 07:29:07 PDT 2021

Radio Information

Radio A Model	Viper: 140-5048-302
Radio B Model	Viper: 140-5048-302

Refresh Status

Help

Check the base station firmware version

This completes the base station upgrade procedure.